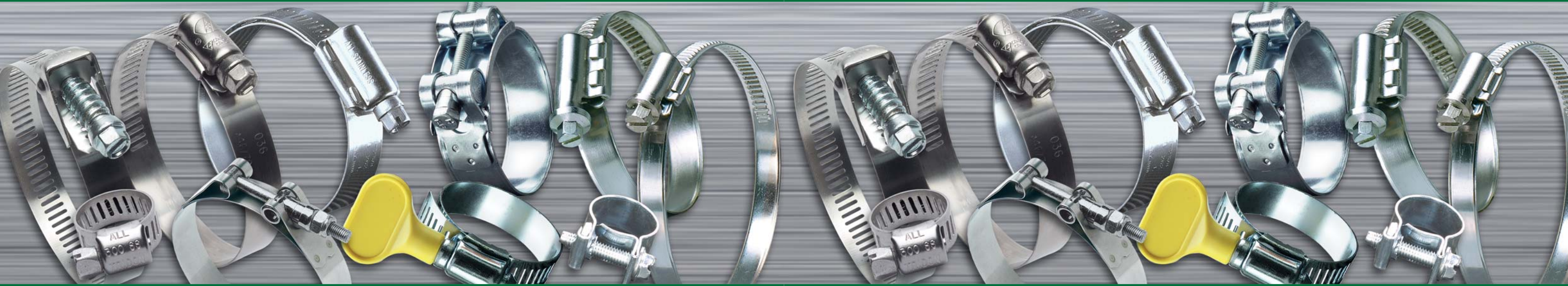


TRIDON

WWW.TRIDONCLAMPS.EU

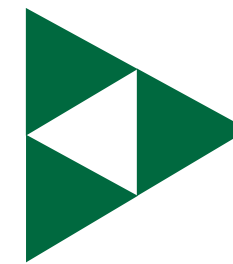
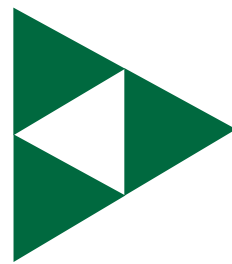
TRIDON

FOR QUALITY, SERVICE & SELECTION, TRUST THE CLAMP PROFESSIONALS



TRIDON® BRAND IS A REGISTERED TRADEMARK OF IDEAL - A TOMKINS COMPANY

AUTOMOTIVE • HARDWARE • INDUSTRIAL • MARINE • M.R.O. • O.E.M. • PLUMBING



DISTRIBUTED BY

IDEAL - A TOMKINS COMPANY

3200 PARKER DRIVE, ST. AUGUSTINE, FL, U.S.A.

TEL: 00.1.904.829.1000 • FAX: 00.1.904.825.1121

FOR SALES & CUSTOMER SERVICE, EMAIL INTLSERVICE@IDEAL-TRIDONCLAMPS.COM

PRODUCT CATALOG

For Quality, Service & Selection, Trust the Clamp Professionals



Founded in 1913, IDEAL – A Tomkins Company is the largest and most trusted clamp manufacturer in North America and has recently expanded its clamp offering to sell directly to European original equipment manufacturers, distributors, warehouses, retailers and groups. As the leading designer and clamp manufacturer of TRIDON® worm gear clamps, we invite you to explore our products and services catalog for automotive, industrial, hardware, plumbing, marine, heavy equipment and specialty hose clamps.

IDEAL is headquartered in St. Augustine, Florida, USA, with additional manufacturing operations in Smyrna, Tennessee, USA; Matamoros, Mexico; and Suzhou, China. Together, these facilities manufacture worm drive hose clamps, high-torque clamps, constant tension clamps, T-Bolts, V-Inserts, No-Hub couplings and a host of specialty and custom clamp products.

Our products and services philosophy promotes engineering ingenuity, market-driving initiatives, and a commitment to excellence. Our advantages include:

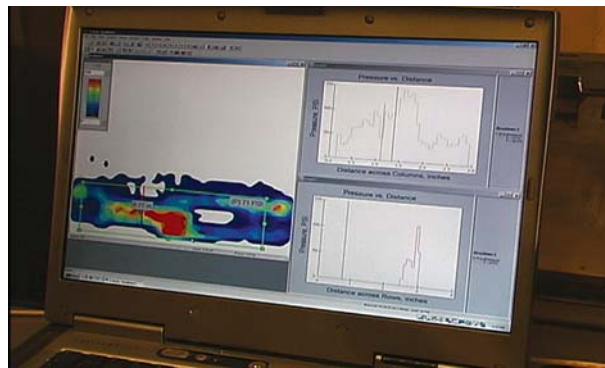
- Design and manufacturer engineering expertise
- Material and metallurgical science
- Automated assembly processes
- Advanced screw manufacturing technology
- High-speed stamping
- Automated packing
- Distribution channels

Quality & Engineering

Our commitment to superior quality, environmental responsibility, and process integrity has earned and maintained facility certifications for ISO9001 and 14001, as well as TS16949. Our facilities use only the finest quality AISI certified steel and manufacturing best practices for clamp products you can trust.

We operate with the latest manufacturing equipment and facilities from networked manufacturing complexes to advanced laboratory analysis. Our expertise revolves around a diversified team of engineers and operators equipped with the latest testing labs and machine tuning capabilities. We test and certify our performance to standards and real life conditions for the ultimate product satisfaction.

Our labs and technicians perform temperature tests, salt spray tests, band load and tension tests, calibration tests and often develop custom procedures to fit a customer requirement. We can develop custom designs for any application from band notching and slotting to special finishes and screw head designs. Using 3-D modeling that includes stress and finite elemental analysis, we can help determine the best materials and configuration for your application.



Partnership

TRIDON® clamp brand is a registered trademark of IDEAL – A Tomkins Company. Headquartered in London, Tomkins is a world-class global engineering and manufacturing group with market and technical leadership across two businesses: Industrial & Automotive and Building Products. Its products are sold into a wide variety of end-markets. Tomkins ordinary shares are listed on the London Stock Exchange under the symbol TOMK and also trade in ADR form on the New York Stock Exchange under the symbol TKS. For further information, visit www.tomkins.co.uk.

Let us help you produce or supply your next order for a production line or create a clamp mix for re-sale locations. Send us inquiries in your preferred language. We can connect you with our sales representatives and welcome you to partner with us as you plan your next clamp program.

TRIDON® brand offers:

- Excellent customer service
- Experienced industry engineering talent
- A broad range of high quality products

We offer passionate people partnering to set the global standard of excellence in everything we do. Whether you want a standardized product or specialized attention – we have the team, the facilities and the knowledge to deliver what you want. For quality, service and selection, trust the clamp professionals.

Our Tomkins affiliate companies offer many notable brand names that you may recognize, such as: AirAware™, Amflo®, Camel®, Edelmann®, Gates®, Plews-LubriMatic™, Schrader-Bridgeport®, Stant®, TRIDON®, Tru-Flate®, and Unicoil™.

Geographical Markets:

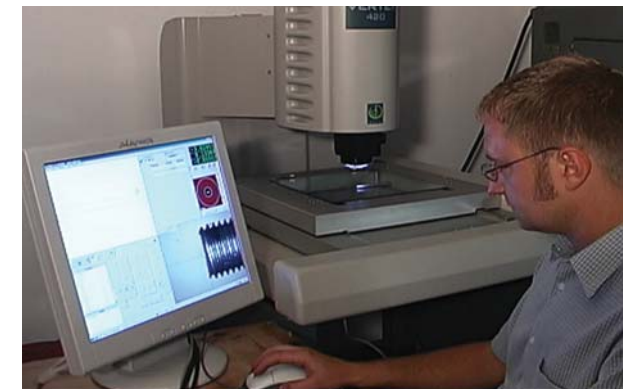
- Europe
- USA/Canada
- Mexico
- Central America
- South America
- Africa
- Asia
- Australia & New Zealand

Industry Markets:

- General replacement
- OEM: Original Equipment Manufacturing
- Automotive
- Heavy Equipment
- Industrial
- Food processing and Sanitation
- Hardware
- Plumbing
- Marine
- Government & Military
- Truck & Engine
- Telecommunications

Learn more about our progress, services and product offerings at:

www.tridonclamps.eu





12mm



9mm

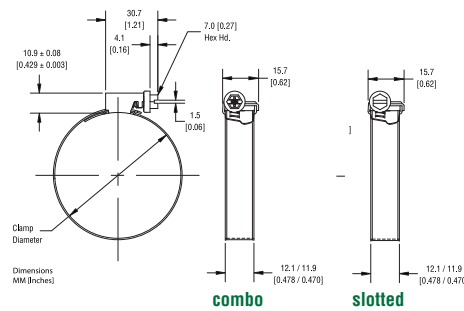


7.5mm

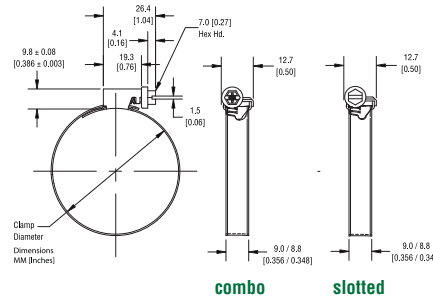
TRIDON® Worm Drive Non-Perforated (Embossed) Band Clamps

Series	Band Width	Material Composition	Screw Size and Description
141	12 mm (.47")	W1	7 mm screw hex-head combo slotted
142	12 mm (.47")	W2	7 mm screw hex-head combo slotted
143	12 mm (.47")	W3	7 mm screw hex-head slotted
144	12 mm (.47")	W4	7 mm screw hex-head slotted
145	12 mm (.47")	W5	7 mm screw hex-head slotted
131	9 mm (.35")	W1	7 mm screw hex-head combo slotted
132	9 mm (.35")	W2	7 mm screw hex-head combo slotted
133	9 mm (.35")	W3	7 mm screw hex-head slotted
134	9 mm (.35")	W4	7 mm screw hex-head slotted
135	9 mm (.35")	W5	7 mm screw hex-head slotted
122	7.5 mm (.29")	W2	6 mm screw hex-head combo slotted

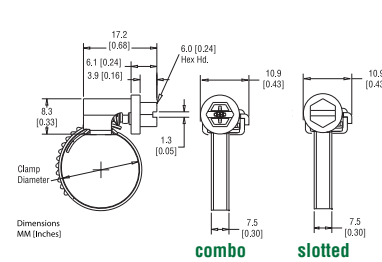
12mm Band



9mm Band



7.5mm Band

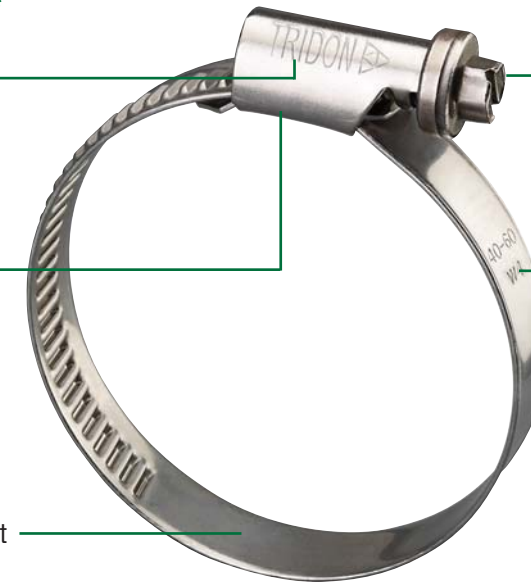


FEATURES & BENEFITS*

TRIDON stamp on housing for a name you can trust

Cross saddle for more even support on installation and long term band tension

Smooth inside band protects soft hoses against shearing and fray.



Unique screw design and asymmetric housing provides improved housing roll resistance and uniform sealing strength

Material spec and clamping range stamped on band to aid identification

*Meets or exceeds DIN 3017 standard

TRIDON® Worm Drive Non-Perforated (Embossed) Band Clamps

Band Width	Part No. W1	Part No. W2	Part No. W3	Part No. W4	Part No. W5	Clamping Range		Torque Performance				
						Diameter Min-Max (mm)	Diameter Min-Max (inches)	Installation (Nm)	Installation (in-lbs)	Ultimate (Min.) (Nm)	Ultimate (Min.) (in-lbs)	
7.5mm		122-012				8-12	5/16 - 15/32	1.7	15	3.2	28	
		122-016				10-16	13/32 - 5/8	1.7	15	3.2	28	
		122-018				12-18	15/32 - 11/16	1.7	15	3.2	28	
		131-012	132-012	133-012	134-012	135-012	8-12	5/16 - 15/32	2	18	4	35
		131-016	132-016	133-016	134-016	135-016	8-16	5/16 - 5/8	2	18	4	35
		131-018					12-18	15/32 - 11/16	2	18	4	35
		131-020	132-020	133-020	134-020	135-020	12-20	15/32 - 25/32	3	26	4.5	40
		131-022	132-022	133-022	134-022	135-022	12-22	15/32 - 7/8	3	26	4.5	40
		131-027	132-027	133-027	134-027	135-027	16-27	5/8 - 1 1/16	3	26	4.5	40
		131-032	132-032	133-032	134-032	135-032	20-32	25/32 - 1 1/4	3	26	4.5	40
9mm	131-040	132-040	133-040	134-040	135-040	25-40	1 - 9/16	3	26	4.5	40	
	131-045	132-045	133-045	134-045	135-045	30-45	1 3/16 - 1 3/4	3	26	4.5	40	
	131-050	132-050	133-050	134-050	135-050	32-50	1 1/4 - 1 31/32	3	26	4.5	40	
	131-060	132-060	133-060	134-060	135-060	40-60	1 9/16 - 2 3/8	3	26	4.5	40	
	131-070	132-070	133-070	134-070	135-070	50-70	1 31/32 - 2 3/4	3	26	4.5	40	
	131-080	132-080	133-080	134-080	135-080	60-80	2 3/8 - 3 1/8	3	26	4.5	40	
	131-090	132-090	133-090	134-090	135-090	70-90	2 3/4 - 3 17/32	3	26	4.5	40	
	131-100	132-100	133-100	134-100	135-100	80-100	3 1/8 - 3 15/16	3	26	4.5	40	
	131-110	132-110	133-110	134-110	135-110	90-110	3 1/2 - 4 5/16	3	26	4.5	40	
	131-120	132-120	133-120	134-120	135-120	100-120	3 5/16 - 4 23/32	3	26	4.5	40	
12mm	131-130	132-130	133-130	134-130	135-130	110-130	4 5/16 - 5 1/8	3	26	4.5	40	
	131-140	132-140	133-140	134-140	135-140	120-140	4 23/32 - 5 1/2	3	26	4.5	40	
	131-150	132-150	133-150	134-150	135-150	130-150	5 1/8 - 5 29/32	3	26	4.5	40	
	131-160	132-160	133-160	134-160	135-160	140-160	5 1/2 - 6 5/16	3	26	4.5	40	
	141-027	142-027	143-027	144-027	145-027	16-27	5/8 - 1 1/16	5	44	8	71	
	141-032	142-032	143-032	144-032	145-032	20-32	25/32 - 1 1/4	5	44	8	71	
	141-040	142-040	143-040	144-040	145-040	25-40	1 - 9/16	5	44	8.3	73	
	141-045	142-045	143-045	144-045	145-045	30-45	1 3/16 - 1 3/4	5	44	8.3	73	
	141-050	142-050	143-050	144-050	145-050	32-50	1 1/4 - 1 31/32	5	44	8.3	73	
	141-060	142-060	143-060	144-060	145-060	40-60	1 9/16 - 2 3/8	5	44	8.3	73	

Additional sizes available upon request

	Corrosion Resistance	Common Uses	Germany DIN	Europe EN	France AFNOR	UK BS	Russia GOST
W1	Low requirements	Household applications, indoor plumbing work	Zinc Plated Steel	Zinc Plated Steel	Zinc Plated Steel	Zinc Plated Steel	Zinc Plated Steel
W2	Average requirements	Cars, trucks, some mechanical engineering	Band and housing: W3 material; Screw: Zinc Plated Steel	Band and housing: W3 material; Screw: Zinc Plated Steel	Band and housing: W3 material; Screw: Zinc Plated Steel	Band and housing: W3 material; Screw: Zinc Plated Steel	Band and housing: W3 material; Screw: Zinc Plated Steel
W3	Medium requirements	Automotive OE	1.4016	X8Cr17	Z 8 C 17	430 S 17 430 S 18	12Ch17
W4	High requirements. Low magnetic permeability	For critical connections in cars such as petrol pipes, close to critical and electronic circuits, top grade mechanical engineering, agricultural machinery, motorbikes, signs, general outdoors, stainless steel chimneys	1.4301	X5CrNi1810	Z7 CN 18-09	304 S 15 304 S 18 304 S 31	8Ch18Ni10
W5	Maximum requirements. Salt water resistant. Low magnetic permeability	Close to critical and electronic circuits, shipbuilding, defense technology, food processing, sewage treatment facilities, chemical and mechanical engineering	1.4571 1.4401	X6CrNiMoTi17122 X5CrNiMo17122	Z6 CNDT 17-12-2 Z7 CND 17-12-02	320 S 18 320 S 31 316 S 31	10Ch17N13M2T



300 Series

TRIDON® Micro-Gear® 300 Series

Screw: 6.35mm (1/4") hex combo, plated steel
 Band: 7.94mm (5/16") band width, stainless steel
 Housing: Low profile, plated steel
 Corrosion Resistance: Low requirements



325 Series

TRIDON® Micro-Gear® 325 Series

Screw: 6.35mm (1/4") hex combo, plated steel
 Band: 7.94mm (5/16") band width, 201/301 stainless steel
 Housing: Low profile, 201/301 stainless steel
 Corrosion Resistance: Average requirements



350 Series

TRIDON® Micro-Gear® 350 Series

Screw: 6.35mm (1/4") hex slotted, 410 stainless steel
 Band: 7.94mm (5/16") band width, 201/301 stainless steel
 Housing: Low profile, 201/301 stainless steel
 Corrosion Resistance: Above average requirements



345 Series

TRIDON® Micro-Gear® 345 Series

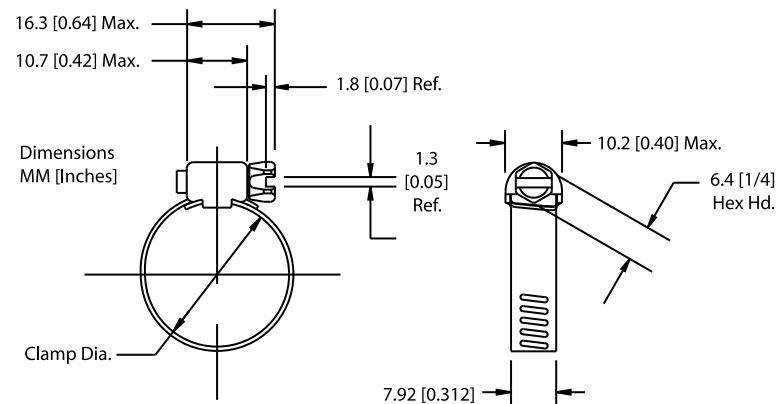
Screw: 6.35mm (1/4") hex slotted, 300 stainless steel
 Band: 7.94mm (5/16") band width, 300 stainless steel
 Housing: Low profile, 300 stainless steel
 Corrosion Resistance: High requirements
 Low magnetic permeability



359 Series

TRIDON® Micro-Gear® 359 Series

Screw: 6.35mm (1/4") hex slotted, 316 stainless steel
 Band: 7.94mm (5/16") band width, 316 stainless steel
 Housing: Low profile, 316 stainless steel
 Corrosion Resistance: High requirements. Salt water resistant.
 Low magnetic permeability.



Micro-Gear® clamps are tiny, tough and precision engineered for use in small hose applications such as emission control, fuel lines and vacuum hoses. Their slim band and low profile housing make them easy to install in confined areas.

TRIDON® Micro-Gear® Clamps – Sizing / Clamping Range Chart

SAE Sizes	Part No. 300	Part No. 325	Part No. 350	Part No. 345	Part No. 359	Min. Dia. (mm)	Max. Dia. (mm)	Min. Dia. (in.)	Max. Dia. (in.)	Installation (Nm)	Installation (in-lbs)	Ultimate (Min. Nm)	Ultimate (Min. in-lbs)
04	300-004	325-004	350-004	345-004	359-004	6	16	1/4	5/8	1.1 - 1.7	10-15	2.3	20
05	300-005	325-005	350-005	345-005	—	7	17	1/4	11/16	1.1 - 1.7	10-15	2.3	20
06	300-006	325-006	350-006	345-006	359-006	8	22	5/16	7/8	1.1 - 1.7	10-15t	2.3	20
08	300-008	325-008	350-008	345-008	—	10	25	3/8	1	1.1 - 1.7	10-15	2.3	20
10	300-010	325-010	350-010	345-010	—	10	27	3/8	1 1/16	1.1 - 1.7	10-15	2.3	20
12	300-012	325-012	350-012	345-012	—	13	32	1/2	1 1/4	1.1 - 1.7	10-15	2.3	20
16	300-016	325-016	350-016	345-016	—	13	38	1/2	1 1/2	1.1 - 1.7	10-15	2.3	20
20	300-020	325-020	350-020	345-020	—	19	44	3/4	1 3/4	1.1 - 1.7	10-15	2.3	20
24	300-024	325-024	350-024	345-024	—	26	51	1	2	1.1 - 1.7	10-15	2.3	20
28	300-028	325-028	350-028	345-028	—	32	57	1 1/4	2 1/4	1.1 - 1.7	10-15	2.3	20
30	300-030	325-030	350-030	345-030	—	35	60	1 3/8	2 3/8	1.1 - 1.7	10-15	2.3	20
32	300-032	325-032	350-032	345-032	—	38	63	1 1/2	2 1/2	1.1 - 1.7	10-15	2.3	20
36	300-036	325-036	350-036	345-036	—	45	70	1 3/4	2 3/4	1.1 - 1.7	10-15	2.3	20
44	300-044	325-044	350-044	345-044	—	57	82	2 1/4	3 1/4	1.1 - 1.7	10-15	2.3	20
48	300-048	325-048	350-048	345-048	—	64	89	2 1/2	3 1/2	1.1 - 1.7	10-15	2.3	20

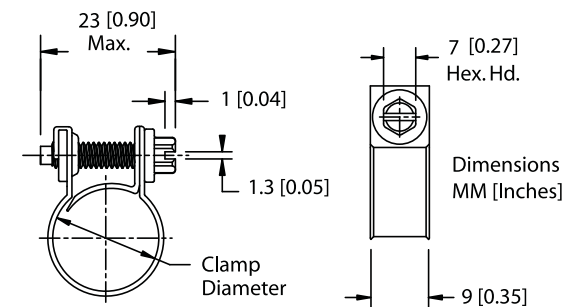
Additional sizes available upon request

FUEL INJECTION

Fuel injection clamps are designed to provide the uniform sealing pressure required on fuel injection hoses. They feature a solid band with rolled edges and a special nut and bolt design.

TRIDON® Automotive F.I. 905 Series

Screw: 7mm hex slotted, clear zinc-plated steel
 Band: 9mm band width, clear zinc-plated steel



905 Series

SAE Sizes	Part No	Min. Dia. (mm)	Max. Dia. (mm)	Min. Dia. (in.)	Max. Dia. (in.)	Installation (Nm)	Installation (in-lbs)	Ultimate (Min. Nm)	Ultimate (Min. in-lbs)
4	905-004	11	13	7/16	1/2	2.8	25	4.5	40
6	905-006	13	15	1/2	9/16	2.8	25	4.5	40
8	905-008	14	16	9/16	5/8	2.8	25	4.5	40

Additional sizes available upon request



600 Series

Tridon® standard 1/2" band clamps are suitable for most common home and automotive repairs. The bands have clean punched rectangular perforations that hold strong and connect easily.

TRIDON® 600 Series

Screw: 7.94mm (5/16") hex slotted, plated steel
 Band: 12.70mm (1/2") band width, stainless steel
 Housing: Plated steel
 Corrosion Resistance: Low requirements



611 Series

TRIDON® 611 Series

Screw: 7.94mm (5/16") hex slotted, plated steel
 Band: 12.70mm (1/2") band width, 201/301 stainless steel
 Housing: 201/301 stainless steel
 Corrosion Resistance: Average requirements



620 Series

TRIDON® 620 Series

Screw: 7.94mm (5/16") hex slotted, 305 stainless steel
 Band: 12.70mm (1/2") band width, 201/301 stainless steel
 Housing: 201/301 stainless steel, with UPC shield
 Corrosion Resistance: Above average to High requirements



620P Series

TRIDON® 620P Series

Screw: 7.94mm (5/16") hex slotted, 305 stainless steel
 Band: 12.70mm (1/2") band width, 300 stainless steel
 Housing: 300 stainless steel, with UPC shield
 Corrosion Resistance: High requirements
 Low magnetic permeability



665 Series

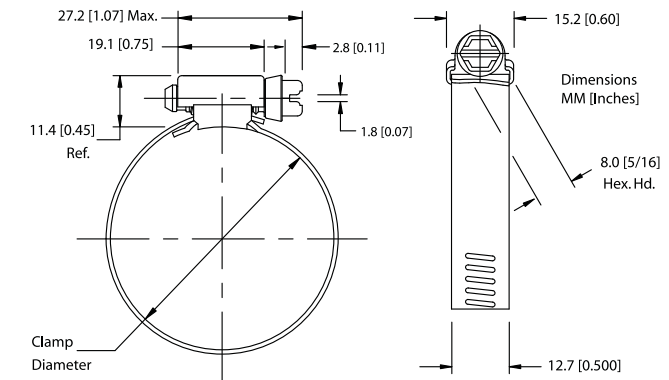
TRIDON® 665 Series

Screw: 7.94mm (5/16") hex slotted, 316 stainless steel
 Band: 12.70mm (1/2") band width, 316 stainless steel
 Housing: 316 stainless steel
 Corrosion Resistance: High requirements. Salt water resistant.
 Low magnetic permeability

TRIDON® Perforated Band Clamps (American Style) – Sizing / Clamping Range Chart

SAE Sizes	Part No. 300	Part No. 325	Part No. 350	Part No. 345	Part No. 359	Min. Dia. (mm)	Max. Dia. (mm)	Min. Dia. (in.)	Max. Dia. (in.)	Installation (Nm)	Installation (in-lbs)	Ultimate (Min. Nm)	Ultimate (Min. in-lbs)
6	600-006	611-006	620-006	620-006P	665-006	10	22	3/8	7/8	3.4 - 4	30 - 35	6.8	60
8	600-008	611-008	620-008	620-008P	665-008	11	25	7/16	1	3.4 - 4	30 - 35	6.8	60
10	600-010	611-010	620-010	620-010P	665-010	13	27	1/2	1 1/16	3.4 - 4	30 - 35	6.8	60
12	600-012	611-012	620-012	620-012P	665-012	13	32	1/2	1 1/4	3.4 - 4	30 - 35	6.8	60
16	600-016	611-016	620-016	620-016P	665-016	18	38	11/16	1 1/2	3.4 - 4	30 - 35	6.8	60
20	600-020	611-020	620-020	620-020P	665-020	19	44	3/4	1 3/4	3.4 - 4	30 - 35	6.8	60
24	600-024	611-024	620-024	620-024P	665-024	25	51	1	2	3.4 - 4	30 - 35	6.8	60
28	600-028	611-028	620-028	620-028P	665-028	32	57	1 1/4	2 1/4	3.4 - 4	30 - 35	6.8	60
32	600-032	611-032	620-032	620-032P	665-032	38	63	1 1/2	2 1/2	3.4 - 4	30 - 35	6.8	60
36	600-036	611-036	620-036	620-036P	665-036	44	70	1 3/4	2 3/4	3.4 - 4	30 - 35	6.8	60
40	600-040	611-040	620-040	620-040P	665-040	51	76	2	3	3.4 - 4	30 - 35	6.8	60
44	600-044	611-044	620-044	620-044P	665-044	57	82	2 1/4	3 1/4	3.4 - 4	30 - 35	6.8	60
48	600-048	611-048	620-048	620-048P	665-048	64	114	2 1/2	3 1/2	3.4 - 4	30 - 35	6.8	60
52	600-052	611-052	620-052	620-052P	665-052	70	95	2 3/4	3 3/4	3.4 - 4	30 - 35	6.8	60
56	600-056	611-056	620-056	620-056P	665-056	76	101	3	4	3.4 - 4	30 - 35	6.8	60
60	600-060	611-060	620-060	620-060P	665-060	83	108	3 1/4	4 1/4	3.4 - 4	30 - 35	6.8	60
64	600-064	611-064	620-064	620-064P	665-064	64	114	2 1/2	4 1/2	3.4 - 4	30 - 35	6.8	60
72	600-072	611-072	620-072	620-072P	665-072	76	127	3	5	3.4 - 4	30 - 35	6.8	60
80	600-080	611-080	620-080	620-080P	665-080	89	140	3 1/2	5 1/2	3.4 - 4	30 - 35	6.8	60
88	600-088	611-088	620-088	620-088P	665-088	102	152	4	6	3.4 - 4	30 - 35	6.8	60
96	600-096	611-096	620-096	620-096P	665-096	114	165	4 1/2	6 1/2	3.4 - 4	30 - 35	6.8	60
104	600-104	611-104	620-104	620-104P	665-104	127	178	5	7	3.4 - 4	30 - 35	6.8	60

Additional sizes available upon request





580 Series

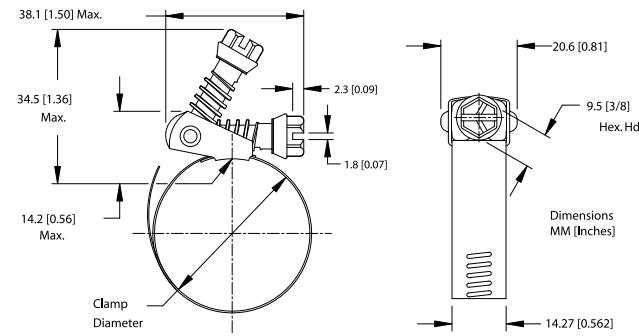


581 Series

Tridon® quick-release Snaplock® clamps are good for closed system applications where the clamp must be disengaged to be applied. The swivel-action locking of screw to band makes installation and removal fast and easy.

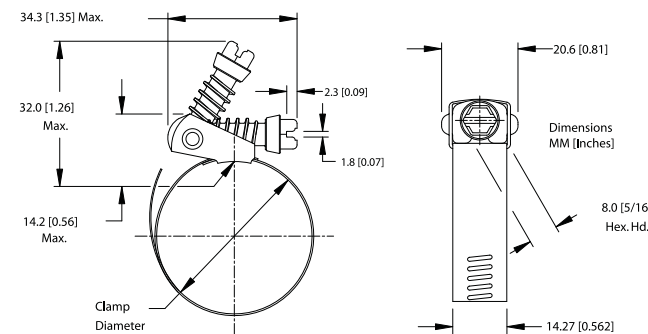
TRIDON® Snaplock® 580 Series

Screw: 7.94mm (5/16") hex slotted, plated steel
 Band: 14.29mm (9/16") band width, 201/301 stainless steel
 Housing: 201/301 stainless steel



TRIDON® Snaplock® 581 Series

Screw: 9.52mm (3/8") hex-head, combo slotted, 410 stainless steel
 Band: 14.29mm (9/16") band width, 201/301 stainless steel
 Housing: 201/301 stainless steel



TRIDON® Quick Release Snaplock® Clamps – Sizing / Clamping Range Chart

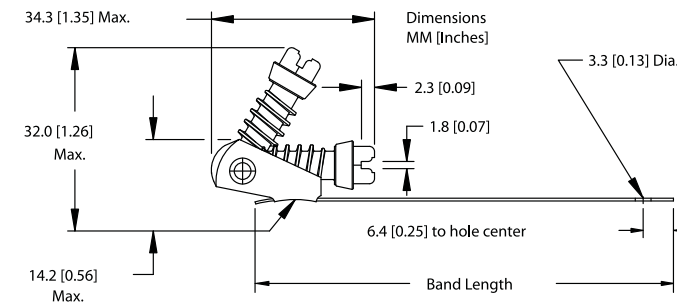
SAE Sizes	Part No. 580	Part No. 581	Min. Dia. (mm)	Max. Dia. (mm)	Min. Dia. (in.)	Max. Dia. (in.)	Installation (Nm)	Installation (in-lbs)	Ultimate (Min. Nm)	Ultimate (in-lbs)
12	580-012	581-012	13	32	1/2	1 1/4	3.4 - 4	30 - 35	6.8	60
20	580-020	581-020	19	44	3/4	1 3/4	3.4 - 4	30 - 35	6.8	60
24	580-024	581-024	26	51	1	2	3.4 - 4	30 - 35	6.8	60
28	580-028	581-028	26	57	1	2 1/4	3.4 - 4	30 - 35	6.8	60
36	580-036	581-036	26	70	1	2 3/4	3.4 - 4	30 - 35	6.8	60
48	580-048	581-048	38	89	1 1/2	3 1/2	3.4 - 4	30 - 35	6.8	60
56	580-056	581-056	26	101	1	4	3.4 - 4	30 - 35	6.8	60
72	580-072	581-072	51	127	2	5	3.4 - 4	30 - 35	6.8	60
88	580-088	581-088	51	152	2	6	3.4 - 4	30 - 35	6.8	60
104	580-104	581-104	45	178	1 3/4	7	3.4 - 4	30 - 35	6.8	60
116	580-116	581-116	45	197	1 3/4	7 3/4	3.4 - 4	30 - 35	6.8	60
128	580-128	581-128	45	216	2 1/4	8 1/2	3.4 - 4	30 - 35	6.8	60
136	580-136	581-136	45	228	1 3/4	9	3.4 - 4	30 - 35	6.8	60
152	580-152	581-152	51	254	2	10	3.4 - 4	30 - 35	6.8	60
188	580-188	581-188	51	311	2	12 1/4	3.4 - 4	30 - 35	6.8	60

Clamps are shipped disengaged. Information on special sizes available on request.

This unique two part clamp is adaptable to a variety of latching or locking applications where repeated opening and closing is necessary. Holes in the end of each part allow for permanent installation of clamp with rivets or screws.

Part 1 - TRIDON® 582

Screw: 7.94mm (5/16") hex slotted, plated steel
 Housing: Stainless steel.



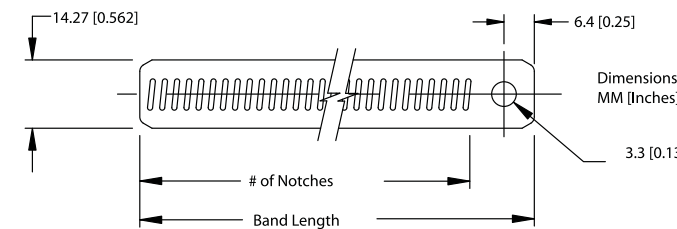
582

TRIDON® Two-Piece Snaplock® Clamps – Housing & Screw

Part No.	Band Length		Hole Diameter	
	mm	inches	mm	inches
582-002	47.2	1.86	3.3	0.13
582-003	38.1	1.50	3.3	0.13
582-004	94.5	3.72	3.3	0.13
582-005	92.1	3.63	6.4	0.25

Part 2 - TRIDON® 583

Band: 14.29mm (9/16") band width, 201/301 stainless steel



583

TRIDON® Two-Piece Snaplock® Clamps – Band

Part No.	Band Length		Hole Diameter	
	mm	inches	mm	inches
583-002	122.2	4.81	3.3	0.13
583-003	98.4	3.88	3.3	0.13
583-004	165.1	6.50	3.3	0.13
583-005	120.7	4.75	3.3	0.13
583-006	255.6	10.06	3.3	0.13
583-007	50.8	2.00	3.3	0.13
583-008	152.4	6.00	6.4	0.25



548 Series

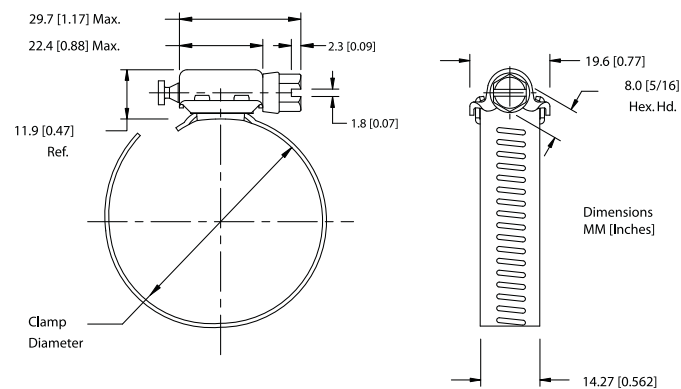
Surelock's unbound pull-through design makes installation easy, with added captured screw design for trouble-free connection and tensioning. Extended housing embraces 25% more screw threads than competitive designs.

TRIDON® Surelock 548 Series

Screw: 7.94mm (5/16") hex slotted, 300 stainless steel
 Band: 14.29mm (9/16") band width, 300 stainless steel
 Housing: 300 stainless steel

TRIDON® Surelock 549 Series

Screw: 7.94mm (5/16") hex slotted, 316 stainless steel.
 Band: 14.29mm (9/16") band width, 316 stainless steel.
 Housing: 316 stainless steel



549 Series

TRIDON® Surelock Clamps – Sizing / Clamping Range Chart

SAE Sizes	Part No. 548	Part No. 549	Min. Dia. (mm)	Max. Dia. (mm)	Min. Dia. (in.)	Max. Dia. (in.)	Installation (Nm)	Installation (in.-lbs)	Ultimate (Min. Nm)	Ultimate (in.-lbs)
12	548-012	549-012	13	32	1/2	1 1/4	5.1	45	8.5	75
20	548-020	549-020	19	44	3/4	1 3/4	5.1	45	8.5	75
24	548-024	549-024	19	51	3/4	2	5.1	45	8.5	75
28	548-028	549-028	26	57	1	2 1/4	5.1	45	8.5	75
32	548-032	549-032	26	63	1	2 1/2	5.1	45	8.5	75
36	548-036	549-036	22	70	7/8	2 3/4	5.1	45	8.5	75
48	548-048	549-048	26	89	1	3 1/2	5.1	45	8.5	75
56	548-056	549-056	26	101	1	4	5.1	45	8.5	75
72	548-072	549-072	51	127	2	5	5.1	45	8.5	75
80	548-080	549-080	65	140	2 9/16	5 1/2	5.1	45	8.5	75
88	548-088	549-088	51	152	2	6	5.1	45	8.5	75
104	548-104	549-104	51	178	2	7	5.1	45	8.5	75
116	548-116	549-116	44	197	1 3/4	7 3/4	5.1	45	8.5	75
128	548-128	549-128	108	216	4 1/4	8 1/2	5.1	45	8.5	75
152	548-152	549-152	102	254	4	10	5.1	45	8.5	75
180	548-180	549-180	197	298	7 3/4	11 3/4	5.1	45	8.5	75
188	548-188	549-188	159	311	6 1/4	12 1/4	5.1	45	8.5	75

Additional sizes available upon request

Innovative design installs with a simple hand twist, no tools required. Easy to remove and replace. Pull off the screw cap for a tamper-resistant connection. Available in yellow, blue and red. Common applications: automotive heater and radiator hoses, garden hoses, R.V. sewer hoses, dryer vent hoses and more.

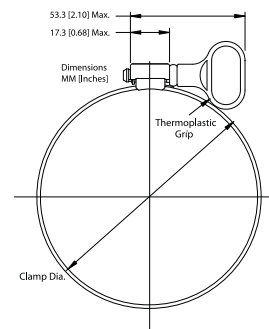
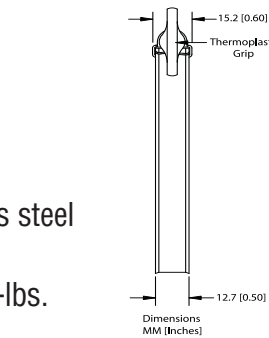
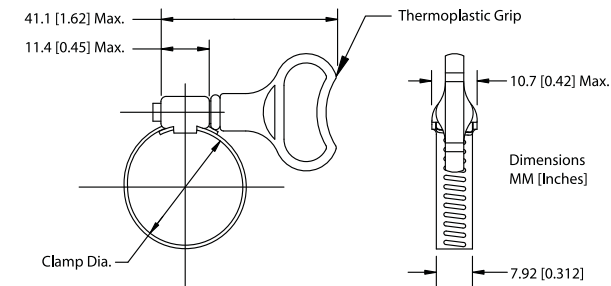
TRIDON® Turn-Key® Clamps

Injection molded thermoplastic screw cap, removable and reusable

Screw: Plated steel
 Band: 12.70mm (1/2") band width, stainless steel
 Housing: Stainless steel
 Installation Torque: 3.4 - 4.0 Nm; 30-35 in.-lbs.
 Ultimate Torque: 6.8 Min. Nm; 60 in.-lbs.

Automotive Hose Clamps:
 Heater = SAE sizes No. 12 or 20
 Radiator = SAE sizes No. 28 or 36

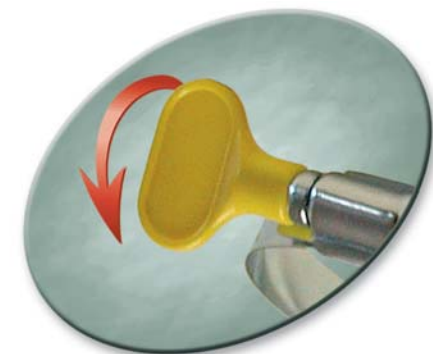
Garden Hose Clamps: SAE size No. 12
 R.V. Sewer Hose Clamps: SAE size No. 48
 Dryer Vent Hose Clamps: SAE size No. 64



Miniature Turn-Key clamp dimensions shown in drawing.

TRIDON® Turn-Key® Clamps – Sizing / Clamping Range Chart

Part No.	SAE Sizes	Color	Min. Dia. (mm)	Max. Dia. (mm)	Min. Dia. (in.)	Max. Dia. (in.)
807-Y04	Mini size 4	Yellow	6	16	1/4	5/8
807-R04	Mini size 4	Red	6	16	1/4	5/8
807-B04	Mini size 4	Blue	6	16	1/4	5/8
807-Y06	Mini size 6	Yellow	10	22	3/8	7/8
807-R06	Mini size 6	Red	10	22	3/8	7/8
807-B06	Mini size 6	Blue	10	22	3/8	7/8
807-Y12	12	Yellow	13	32	1/2	1 1/4
807-R12	12	Red	13	32	1/2	1 1/4
807-B12	12	Blue	13	32	1/2	1 1/4
807-Y20	20	Yellow	19	44	3/4	1 3/4
807-R20	20	Red	19	44	3/4	1 3/4
807-B20	20	Blue	19	44	3/4	1 3/4
807-Y28	28	Yellow	32	57	1 1/4	2 1/4
807-R28	28	Red	32	57	1 1/4	2 1/4
807-B28	28	Blue	32	57	1 1/4	2 1/4
807-Y36	36	Yellow	44	70	1 3/4	2 3/4
807-R36	36	Red	44	70	1 3/4	2 3/4
807-B36	36	Blue	44	70	1 3/4	2 3/4
807-Y48	48	Yellow	64	114	2 1/2	3 1/2
807-R48	48	Red	64	114	2 1/2	3 1/2
807-B48	48	Blue	64	114	2 1/2	3 1/2
807-Y64	64	Yellow	64	114	2 1/2	4 1/2
807-R64	64	Red	64	114	2 1/2	4 1/2
807-B64	64	Blue	64	114	2 1/2	4 1/2



Premium Pow'r-Gear® clamps are designed for high vibration and stubborn leakage applications such as industrial machinery, heavy truck, farm and off-road equipment engines. Features an extra wide 15.87mm (5/8") band and a wide profile housing that provides maximum engagement of screw threads to band. Engineered to deliver exceptionally high rates of band tension to handle the toughest sealing jobs.

TRIDON® Pow'r-Gear® Clamps 86P Series

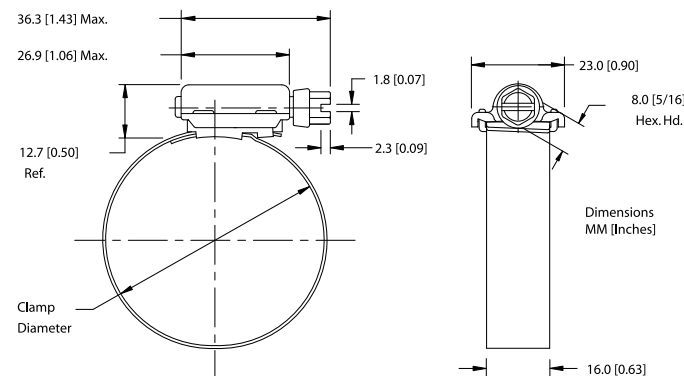
Screw: 7.94mm (5/16") hex-head, 305 stainless steel
 Band: 15.87mm (5/8") band width. 0.711mm (0.028") thick, 300 stainless steel
 Housing: 1.542mm (0.060") thick, 300 stainless steel
 Corrosion Resistance: High requirements

TRIDON® Pow'r-Gear® Clamps 86M Series

For maximum protection of soft hoses. Protective liner prevents extrusion and shearing of hose through band notches. Extended band design prevents liner from skewing during installation.
 Screw: 7.94mm (5/16") hex-head, 305 stainless steel
 Band & Liner: 15.87mm (5/8") band width, 0.711mm (0.028") thick, 300 stainless steel
 Housing: 1.542mm (0.060") thick, 300 stainless steel.
 Corrosion Resistance: High requirements

TRIDON® Pow'r-Gear® Clamps 86X Series

Extra band notches allow greater opened and closed working diameters. Only five sizes cover clamping diameters from 31.75mm to 257.175mm (1 1/4" to 10 1/8"). Minimizes inventory investment without compromising application coverage.
 Screw: 7.94mm (5/16") hex-head, 410 stainless steel
 Band: 15.87mm (5/8") design, 0.711mm (0.028") thick, 300 stainless steel.
 Housing: 1.542mm (0.060") thick, 300 stainless steel
 Corrosion Resistance: Above average requirements



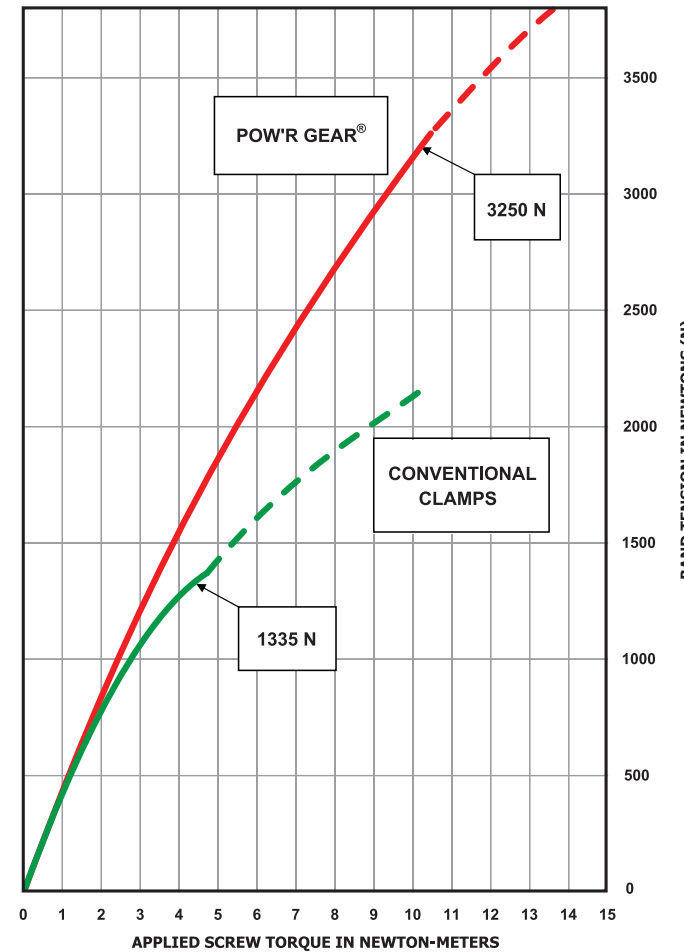
86P Series



86M Series



86X Series



POW'R-GEAR® clamps deliver over 1900 Newtons of band tension at 10 Nm of screw torque. That's more than twice the band tension of conventional clamps.

TRIDON® Pow'r-Gear® Clamps – Sizing / Clamping Range Chart

SAE Sizes	Part No. 86P	Part No. 86M	Min. Dia. (mm)	Max. Dia. (mm)	Min. Dia. (in.)	Max. Dia. (in.)	Installation (Nm)	Installation (in-lbs)	Ultimate (Min. Nm)	Ultimate (in-lbs)
175	86P-175	86M-175	25	45	1	1 3/4	8.5 - 10.2	75 - 90	16.9	150
212	86P-200	86M-200	32	54	1 1/4	2 1/8	8.5 - 10.2	75 - 90	16.9	150
262	86P-250	86M-250	45	66	1 3/4	2 5/8	8.5 - 10.2	75 - 90	16.9	150
312	86P-300	86M-300	57	79	2 1/4	3 1/8	8.5 - 10.2	75 - 90	16.9	150
362	86P-350	86M-350	70	92	2 3/4	3 5/8	8.5 - 10.2	75 - 90	16.9	150
412	86P-400	86M-400	83	105	3 1/4	4 1/8	8.5 - 10.2	75 - 90	16.9	150
462	86P-450	86M-450	95	117	3 3/4	4 5/8	8.5 - 10.2	75 - 90	16.9	150
512	86P-500	86M-500	108	130	4 1/4	5 1/8	8.5 - 10.2	75 - 90	16.9	150
562	86P-550	86M-550	121	143	4 3/4	5 5/8	8.5 - 10.2	75 - 90	16.9	150
612	86P-600	86M-600	133	155	5 1/4	6 1/8	8.5 - 10.2	75 - 90	16.9	150
662	86P-650	86M-650	146	168	5 3/4	6 5/8	8.5 - 10.2	75 - 90	16.9	150
712	86P-700	86M-700	159	181	6 1/4	7 1/8	8.5 - 10.2	75 - 90	16.9	150
762	86P-750	86M-750	172	193	6 3/4	7 5/8	8.5 - 10.2	75 - 90	16.9	150
812	86P-800	86M-800	184	206	7 1/4	8 1/8	8.5 - 10.2	75 - 90	16.9	150
862	86P-850	86M-850	197	219	7 3/4	8 5/8	8.5 - 10.2	75 - 90	16.9	150
912	86P-900	86M-900	210	232	8 1/4	9 1/8	8.5 - 10.2	75 - 90	16.9	150

SAE Sizes	Part No.	Min. Dia. (mm)	Max. Dia. (mm)	Min. Dia. (in.)	Max. Dia. (in.)	Installation (Nm)	Installation (in-lbs)	Ultimate (Min. Nm)	Ultimate (Min. in-lbs)
262	86X-200	32	66	1 1/4	2 5/8	8.5 - 10.2	75 - 90	16.9	150
412	86X-300	51	104	2	4 1/8	8.5 - 10.2	75 - 90	16.9	150
612	86X-400	102	155	4	6 1/8	8.5 - 10.2	75 - 90	16.9	150
912	86X-500	153	231	6	9 1/8	8.5 - 10.2	75 - 90	16.9	150
1012	86X-600	178	257	7	10 1/8	8.5 - 10.2	75 - 90	16.9	150

845 Series



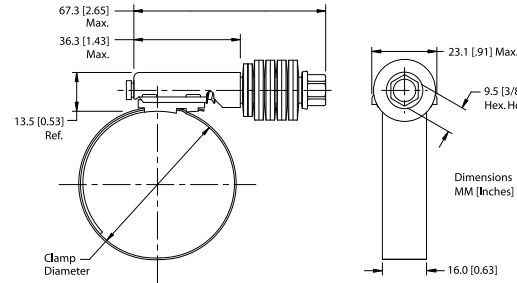
847 Series



Using a Belleville spring design to eliminate "cold flow" leakage, Flex-Gear® and Flex-Gear® clamps adjust with the hose and fitting to maintain constant tension on the connection, eliminating leak paths. Excellent choice for fluctuating and extreme temperature applications and thermal compensation.

TRIDON® Flex-Gear HD® Clamps 845 Series
Larger, heavier gauge and precision formed Belleville springs

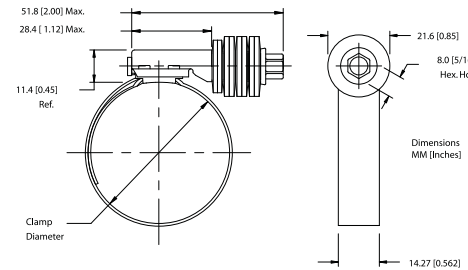
Screw: 9.52mm (3/8") hex-head, 410 stainless steel
Band: 15.87mm (5/8") band width, 300 stainless steel
Liner: 300 stainless steel
Housing: 300 stainless steel
Springs: 300 stainless steel
Installation Torque: 8.5 Nm; 75 in.-lbs.
Ultimate Torque: 14.1 Min. Nm; 125 in.-lbs.



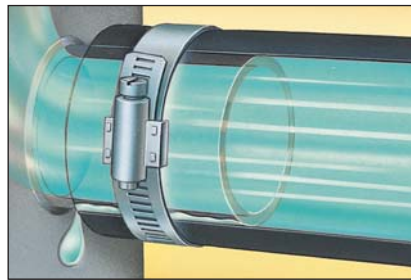
SAE Sizes	Part No.	Min. Dia. (mm)	Max. Dia. (mm)	Min. Dia. (in.)	Max. Dia. (in.)
175	845-175	25	45	1	1 3/4
212	845-200	32	54	1 1/4	2 1/8
262	845-250	45	67	1 3/4	2 5/8
312	845-300	57	79	2 1/4	3 1/8
362	845-350	70	92	2 3/4	3 5/8
412	845-400	83	105	3 1/4	4 1/8
462	845-450	95	117	3 3/4	4 5/8
512	845-500	108	130	4 1/4	5 1/8
562	845-550	121	143	4 3/4	5 5/8
612	845-600	133	155	5 1/4	6 1/8
662	845-650	146	168	5 3/4	6 5/8
712	845-700	159	181	6 1/4	7 1/8
762	845-750	172	193	6 3/4	7 5/8
812	845-800	184	206	7 1/4	8 1/8
862	845-850	197	219	7 3/4	8 5/8
912	845-900	210	232	8 1/4	9 1/8

TRIDON® Flex-Gear Clamps 847 Series
Larger, heavier gauge and precision formed Belleville springs

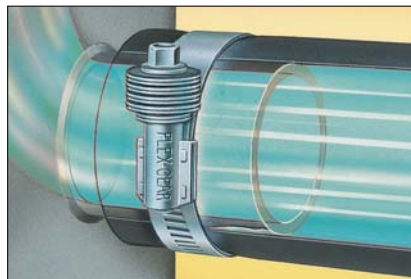
Screw: 7.94mm (5/16") hex-head, 410 stainless steel
Band: 14.29mm (9/16") band width, 300 stainless steel
Liner: 300 stainless steel
Housing: 300 stainless steel
Springs: 300 stainless steel
Installation Torque: 5.6 Nm; 50 in.-lbs.
Ultimate Torque: 9.6 Min. Nm; 85 in.-lbs.



SAE Sizes	Part No.	Min. Dia. (mm)	Max. Dia. (mm)	Min. Dia. (in.)	Max. Dia. (in.)
10	847-010	14	27	9/16	1 1/16
12	847-012	16	32	5/8	1 1/4
16	847-016	21	38	13/16	1 1/2
20	847-020	20	44	13/16	1 3/4
24	847-024	27	51	1 1/16	2
28	847-028	33	57	1 5/16	2 1/4
32	847-032	40	63	1 9/16	2 1/2
36	847-036	46	70	1 13/16	2 3/4
40	847-040	52	76	2 1/16	3
44	847-044	59	82	2 5/16	3 1/4
48	847-048	65	89	2 9/16	3 1/2



Non-compensating clamp cannot adjust during extreme temperature changes, allowing leaks to occur



Flex-Gear adjusts with the hose and fitting to maintain constant tension on the connection, eliminating leak paths

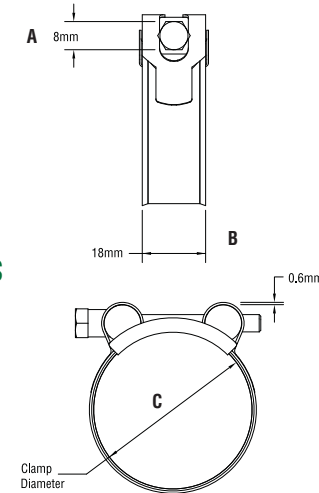
Bolt & Barrel Heavy Duty T-Bolt clamps provide uniform sealing pressure for a positive, reliable seal. Specifically designed for use in high vibration and large diameter applications. Typical applications include truck air intake systems, cold side charge air systems, off-road equipment and industrial machinery.

TRIDON® Bolt & Barrel 873 Series

All stainless steel.

TRIDON® Bolt & Barrel 872 Series

High-grade steel and stainless steel construction.
Zinc plated, clear finish.
Stainless steel band and bridge, steel bolt and barrels.



TRIDON® Bolt & Barrel 871 Series

High-grade steel construction.
Zinc plated, clear finish.

Bolt & Barrel Clamp



Part No. 871	Part No. 872	Part No. 873	Min. Dia. (mm)	Max. Dia. (mm)	Min. Dia. (in.)	Max. Dia. (in.)	B		A	
							Band Width (mm)	(in.)	Hex-Hd Size (mm)	(in.)
871-023	872-023	873-023	23	25	0.91	0.98	18	0.71	8	0.31
871-026	872-026	873-026	26	28	1.02	1.1	18	0.71	8	0.31
871-029	872-029	873-029	29	31	1.14	1.22	20	0.79	10	0.39
871-032	872-032	873-032	32	35	1.26	1.38	20	0.79	10	0.39
871-036	872-036	873-036	36	39	1.42	1.54	20	0.79	10	0.39
871-040	872-040	873-040	40	43	1.57	1.69	20	0.79	10	0.39
871-044	872-044	873-044	44	47	1.73	1.85	22	0.87	10	0.39
871-048	872-048	873-048	48	51	1.89	2.01	22	0.87	10	0.39
871-052	872-052	873-052	52	55	2.05	2.17	22	0.87	10	0.39
871-056	872-056	873-056	56	59	2.2	2.32	22	0.87	10	0.39
871-060	872-060	873-060	60	63	2.36	2.48	22	0.87	10	0.39
871-064	872-064	873-064	64	67	2.52	2.64	22	0.87	13	0.51
871-068	872-068	873-068	68	73	2.68	2.87	24	0.94	13	0.51
871-074	872-074	873-074	74	79	2.91	3.11	24	0.94	13	0.51
871-080	872-080	873-080	80	85	3.15	3.35	24	0.94	13	0.51
871-086	872-086	873-086	86	91	3.39	3.58	24	0.94	13	0.51
871-092	872-092	873-092	92	97	3.62	3.82	24	0.94	13	0.51
871-098	872-098	873-098	98	103	3.86	4.06	24	0.94	13	0.51
871-104	872-104	873-104	104	112	4.09	4.41	24	0.94	13	0.51
871-113	872-113	873-113	113	121	4.45	4.76	24	0.94	13	0.51
871-122	872-122	873-122	122	130	4.8	5.12	24	0.94	13	0.51
871-131	872-131	873-131	131	139	5.16	5.47	26	1.02	17	0.67
871-140	872-140	873-140	140	148	5.51	5.83	26	1.02	17	0.67
871-149	872-149	873-149	149	161	5.87	6.34	26	1.02	17	0.67
871-162	872-162	873-162	162	174	6.38	6.85	26	1.02	17	0.67
871-175	872-175	873-175	175	187	6.89	7.36	26	1.02	17	0.67
871-188	872-188	873-188	188	200	7.4	7.87	26	1.02	17	0.67
871-201	872-201	873-201	201	213	7.91	8.39	26	1.02	17	0.67
871-214	872-214	873-214	214	226	8.43	8.9	26	1.02	17	0.67
871-227	872-227	873-227	227	239	8.94	9.41	26	1.02	17	0.67
871-240	872-240	873-240	240	252	9.45	9.92	26	1.02	17	0.67
871-253	872-253	873-253	253	265	9.96	10.43	26	1.02	17	0.67
871-266	872-266	873-266	266	278	10.47	10.94	26	1.02	17	0.67
871-279	872-279	873-279	279	291	10.98	11.46	26	1.02	17	0.67
871-292	872-292	873-292	292	304	11.5	11.97	26	1.02	17	0.67



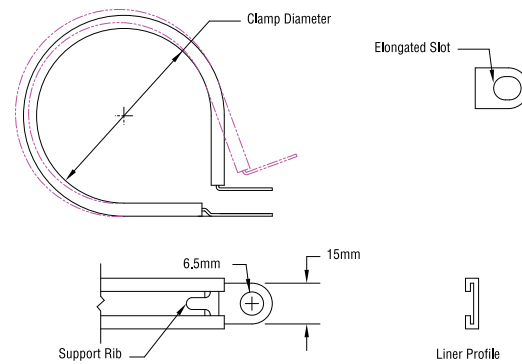
P-Clips are optimal for attaching and retaining hoses, pipes, cables, ducts and lines. Rubber coating and rounded tips prevent damage to soft hoses. Metal band retains shape and flexes without releasing its hold.

TRIDON® P-Clip 804 Series

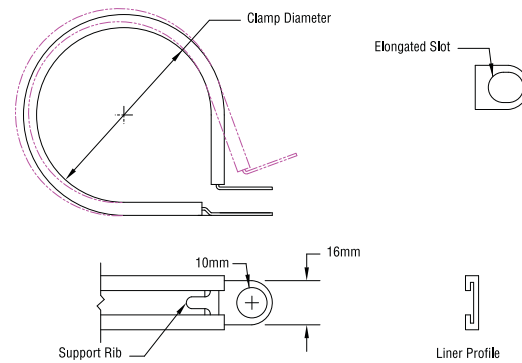
15mm band width, 6mm hole diameter
Rubber coated steel
Rounded tips

P-Clip Part No.	Dia. Closed (mm)	Dia. Closed (in.)
804-004	4	0.16
804-006	6	0.24
804-009	9	0.35
804-010	10	0.39
804-012	12	0.47
804-013	13	0.51
804-015	15	0.59
804-016	16	0.63
804-018	18	0.71
804-019	19	0.75
804-020	20	0.79
804-022	22	0.87
804-025	25	0.98
804-027	27	1.06
804-029	29	1.14
804-032	32	1.26
804-035	35	1.38
804-038	38	1.49
804-040	40	1.57
804-045	45	1.77
804-048	48	1.89
804-050	50	1.97
804-055	55	2.16
804-057	57	2.24
804-060	60	2.36
804-064	64	2.52
804-066	66	2.60
804-070	70	2.75

804 Series



805 Series



TRIDON® P-Clip 805 Series

16mm band width, 10mm hole diameter
Rubber coated steel
Rounded tips

P-Clip Part No.	Dia. Closed (mm)	Dia. Closed (in.)
805-008	8	0.31
805-009	9	0.35
805-010	10	0.39
805-013	13	0.51
805-015	15	0.59
805-016	16	0.63
805-018	18	0.71
805-019	19	0.75
805-020	20	0.79
805-022	22	0.87
805-025	25	0.98
805-027	27	1.06
805-029	29	1.14
805-032	32	1.26
805-035	35	1.38
805-038	38	1.49
805-051	51	2.01

Tomkins
Industrial and Automotive



www.schraderbridgeport.com/tpms



www.plews-edelmann.com/amflo



www.plews-edelmann.com



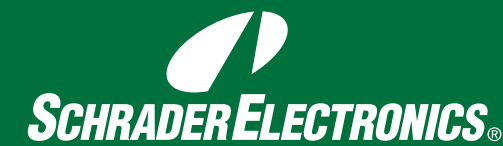
www.gates.com



www.plews-edelmann.com



www.schraderbridgeport.com



www.schraderelectronics.com



www.stant.com



www.tridonclamps.eu



www.plews-edelmann.com

AirAware:

Tire Pressure Monitoring Systems (TPMS)

Amflo:

Air Line Accessories
Pneumatic Hoses

Edelmann:

Power Steering Hose Assemblies
Automotive Fittings
Brake Lines
Transmission Oil Cooler Lines & Fittings
Engine Oil Cooler Lines
Unicoil™ Hose Benders

Gates:

Belts & Hoses
Hydraulics

Plews/LubriMatic:

Oils, Greases & Spray Lubricants
Lubrication Equipment

Schrader-Bridgeport:

Air Compressors & Pressure Washers
Tire Valves (Passenger & Truck)

Schrader Electronics:

Tire Pressure Monitoring Systems (TPMS)

Stant:

Fuel, Radiator & Oil Filler Caps
Thermostats
Cooling & Fuel Cap Testers

Tridon:

Hose Clamps
T-Bolts

Tru-Flate:

Air Line Accessories
Tire Gauges & Hardware
Camel® Tire Hardware & Repair